



Female Cordset



Male Cordset

M12 DC Micro Cordsets

Quick-Connex® M12 DC Micro High Temperature Chem-Gard® Cordsets

Quick-Connex® M12 DC Micro High Temperature Chem-Gard® Cordsets make the replacement of electrical and electronic control devices quick and simple. Cordsets are built with our Chem-Gard® 200°C Cable providing superior resistance to chemicals and high heat and abrasion protection in harsh industrial conditions.

The Chem-Gard® 200°C cable is fully bonded to the connector using a unique process that provides an IP68 seal. Available in straight and 90° Quick-Connex® cordsets.

Ratings



300V

Max Conductor Temperature of Chem-Gard 200 cable: 200°C

IP68 Rated

Performance Characteristics

- ✓ Operating Temperature: -20° to 90°C
- ✓ Superior Chemical Resistance
- ✓ UV Resistant
- ✓ **Bend Radius of Chem-Gard® 200 Cable:**
(Static) 12x Cable OD, (Dynamic) 15x Cable OD

Engineered to Resist



Abrasion



High Temperature



Chemicals

Features & Benefits

Cordsets Made with Chem-Gard® 200°C Cable

Unique fluoropolymer cable design provides resistance to chemicals and high heat. Superior first line defense against abrasion, tearing, cutting, impact and ozone.

Connector Body is Specially Compounded, Thermoplastic Elastomer

Provides long life, resists heat and oil deterioration.

Molded and Keyed Assembly

Provides rapid and secure connection and disconnect. Ensures water, oil, and dust tight seal.

Solid Brass Contact Pins are Nickel Coated and Gold Plated, Machined Crimped to Conductors

Provides long life, resists corrosion, easy positive engagement. Ensures electrical integrity DC applications.

Hard Coated Metal Alloy Knurled Coupling Nut

Resists corrosion, provides quick and secure assembly.

Rubber O-Ring

Seals out oil, chemicals and other contaminants. Provides a positive seal on mated components.

Coupling Nut M12 x 1.0 Thread with One Keyway on Connector Face

Industry standard for M12 DC Micro connectors.

M12 DC Micro Receptacles with 18 AWG Stranded, Nickel Plated Copper Pigtailed with 200°C Fluoropolymer insulation

Provides excellent heat and chemical resistance.

Ordering Information

For complete product ordering information, please scan the QR Code or contact your ATPC sales representative

4 POLE



Female Face View

Color Code

- 1 - BROWN
- 2 - WHITE
- 3 - BLUE
- 4 - BLACK
- 5 - Not Used

Ampacity

5A

Quick-Connex® M12 DC Micro High Temperature Chem-Gard® Cordsets

Style	4 POLE	Cordset Length Feet	Cordset Length Meters
Female Straight Cordsets	CF14C75M001	3.28	1
	CF14C75M002	6.56	2
	CF14C75M004	13.12	4
	CF14C75M006	19.68	6

Female 90° Cordsets	CF14D75M001	3.28	1
	CF14D75M002	6.56	2
	CF14D75M004	13.12	4
	CF14D75M006	19.68	6

Male-Female Straight Cordsets	CF24E75M001	3.28	1
	CF24E75M002	6.56	2
	CF24E75M004	13.12	4
	CF24E75M006	19.68	6
	CF24E75M010	32.80	10

Male Straight/ Female 90° Cordsets	CF24F75M001	3.28	1
	CF24F75M002	6.56	2
	CF24F75M004	13.12	4
	CF24F75M006	19.68	6
	CF24F75M010	32.80	10

Stainless Steel Body Receptacle	4 POLE	Pigtail Length Feet	Pigtail Length Meters
<i>Pigtail leads are Chem-Gard 200C single conductor cables</i>			
Female Panel Mount Receptacle	RF14T75F004S	4	1.22
Male Panel Mount Receptacle	RF14R75F001S	1	0.33
Male Switch Body Mount Receptacle	RF14S75F001S	1	0.33



Female Cordset



Male Cordset



Female Connector



Male Connector

DC & AC Micro Connectors

Quick-Connex® Field Installable Micro Connectors

Quick-Connex® Field Installable AC and M12 DC Micro mechanical connectors can be paired with Trex-Onics® 22-18AWG cables to make 'do-it-yourself' cordsets. IP67 rated to provide a liquid-tight seal to protect the connection from dust and water contamination. Ideal for a quick on-site repair.

Ratings



IP67 Rated

Performance Characteristics

- ✓ DC Micros Operating Temperature -25°C to 85°C
- ✓ AC Micros Operating Temperature -40°C to 105°C
- ✓ Fit Trex-Onics® 22AWG to 18AWG cables, verify cable OD

Features & Benefits

Cordsets can be made with Trex-Onics® 22-18AWG Cables, Rated 80°C

Superior first-line defense against tearing, abrasion, impact, oil, ozone and most chemicals. Extreme all-weather flexibility.

Polyamide Connector Body, PVC Insert & Rubber Sealing Bushing

Impact and crush resistant with an IP67 rating to provide internal protection from dust and fluid spray.

Copper Alloy Pins are Gold Plated

Provides long life, resist corrosion, easy positive engagement.

Screw Locking System

Secure connection using only a screwdriver. Nylon pressing screw threads into body sleeve and compresses pinch ring and seal to grip cable to prevent conductors from pulling out of connector.

Nickel-Plated Brass Coupling Nut

Resists corrosion and gives quick, secure assembly.

Coupling Nuts are M12 x1.0 DC and ½"-20 UNF AC

Industry standard for DC and AC connectors

Ordering Information

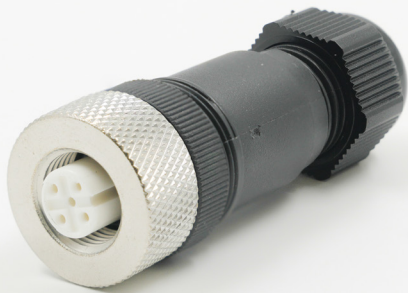
For complete product ordering information, please scan the QR Code or contact your ATPC sales representative

Style	Part No.	No. of Contacts	Voltage	Max Amps	Cable O.D. Range (in.)
DC Field Installable Micros - One Keyway					
Female Straight	30400	4	250V	4	.157" - .315"
	30500	5	125V	4	.157" - .315"
	30510	5	125V	4	.197" - .394"
	30900	8	60V	2	.197" - .394"
Female 90°	39400	4	250V	4	.157" - .315"
	39500	5	125V	4	.157" - .315"
Male Straight	30700	4	250V	4	.157" - .315"
	30600	5	125V	4	.157" - .315"
	30610	5	125V	4	.197" - .394"
	30800	8	60V	2	.197" - .394"
Male 90°	39700	4	250V	4	.157" - .315"
	39600	5	125V	4	.157" - .315"

DC & AC Micro Connectors

Quick-Connex® Field Installable Micro Connectors

Style	Part No.	No. of Contacts	Voltage	Max Amps	Cable O.D. Range (in.)
AC Field Installable Micros - Two Keyways					
Female Straight	30301	3	250V	4	118" - .236"
Female 90°	39301	3	250V	4	118" - .236"
Male Straight	30801	3	250V	4	118" - .236"
Male 90°	39801	3	250V	4	118" - .236"



Female Straight



Male Straight



Female 90°

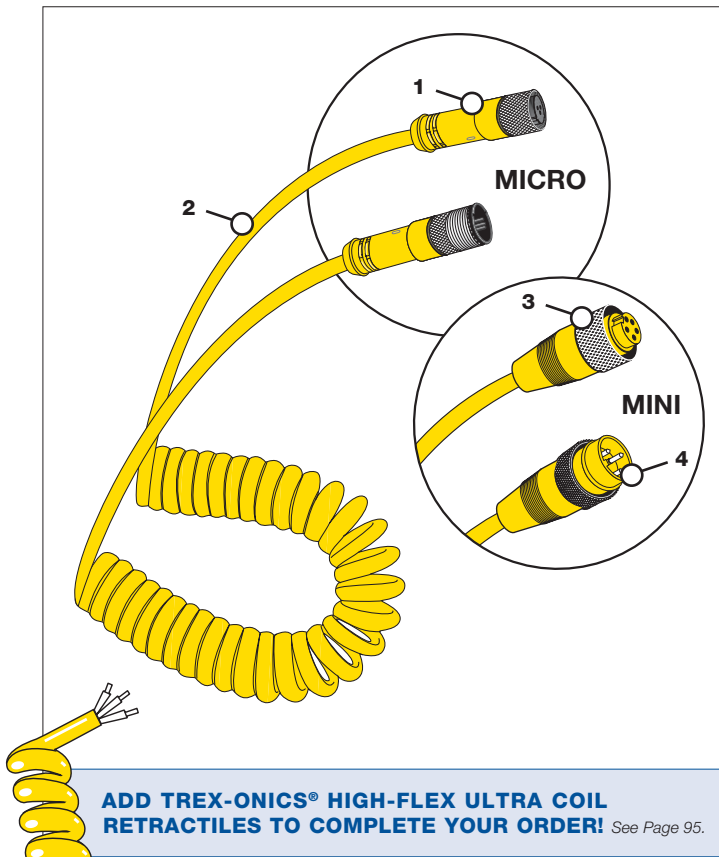


Male 90°

16 & 18 AWG Mini & Micro Retractable Quick-Connects™

- RoHS Compliant
- 16 AWG Mini – 600 V
- 18 AWG AC/DC Micro – 300 V
- Operating Temp Range -40°C to 90°C
- Male/Female Configurations

Cord sets made with TPC's Trex-Onics® High-Flex Ultra-Coil Retractable offers defense against tearing, abrasion, impact, oil, ozone and most chemicals. There is a 5X multiple between a retracted and extended coil, so a 1 foot retracted coil will extend out 5 feet and a 3 foot retracted coil will extend out 15 feet. Built to last, the all polyurethane head design includes solid brass contacts that are nickel coated and gold plated for high/low voltage and low-level signal applications and a hard coated MIL spec anodized aluminum knurled coupling nut for quick and secure assembly.



FEATURES & BENEFITS

- 1. ALL POLYURETHANE HEAD DESIGN** – Chemical, abrasion and impact resistant construction, designed to protect the pins and sleeves from damage.
- 2. PLUG SETS MADE WITH TREX-ONICS® HIGH FLEX ULTRA-COIL RETRACTILES** – Superior first line defense against tearing, abrasion, impact, oil, ozone and most chemicals. Extreme all weather flexibility.
- 3. HARD COATED MIL SPEC ANODIZED ALUMINUM KNURLED COUPLING NUT** – Resists corrosion. Provides quick and secure assembly.
- 4. SOLID BRASS CONTACTS ARE NICKEL COATED AND GOLD PLATED** – Provides long life, resists corrosion, easy positive engagement. Excellent for high/low voltage and low level signal applications.
- 5. EXTRA LONG GROUND PIN** – Ensures first-in, last-out contact for safety in AC applications.
- 6. PIN ORIENTATIONS ARE DESIGNED TO MEET MINI AND MICRO**

APPLICATIONS

- Pendants
- Portable Tools
- Packaging Equipment
- Scissor Lifts
- Robots

ORDERING INFORMATION (MINIMUM PURCHASE MAY BE REQUIRED IF PRODUCT NOT STOCKED)

PART NO.	CORD SIZE AWG/COND	DESCRIPTION	AMPACITY ¹	COIL LENGTH RETRACTED (FT)	COIL LENGTH EXTENDED (FT)	PIGTAIL LENGTH (IN)
60601	16/3	3 Pole Mini Male/Female	13	1	5	12
60603	16/3	3 Pole Mini Male/Female	13	3	15	12
60621	16/4	4 Pole Mini Male/Female	10	1	5	12
60623	16/4	4 Pole Mini Male/Female	10	3	15	12
60891	18/12	12 Pole Mini Male/Female	6	1	5	12
60893	18/12	12 Pole Mini Male/Female	6	3	15	12
60801	18/3	3 Pole AC Micro Male/Female	4	1	5	12
60803	18/3	3 Pole AC Micro Male/Female	4	3	15	12
60821	18/4	4 Pole AC Micro Male/Female	4	1	5	12
60823	18/4	4 Pole AC Micro Male/Female	4	3	15	12
60811	18/3	3 Pole DC Micro Male/Female	4	1	5	12
60813	18/3	3 Pole DC Micro Male/Female	4	3	15	12
60851	18/4	4 Pole DC Micro Male/Female	4	1	5	12
60853	18/4	4 Pole DC Micro Male/Female	4	3	15	12

NOTE: (1) Ampacities are based on 30°C ambient and 90°C conductor temperature. These values are to be used as a guideline and may vary according to the actual cable application.



Panel Mount
Female Receptacle



Panel Mount
Male Receptacle

M12 DC Micro Cordsets

Quick-Connex® M12 DC Micro Receptacles

Quick-Connex® M12 DC Micro Receptacles are available in Female and Male, panel mount and back mount or switch body mount styles. O-Ring and locknut included. DC Micro closure caps with chain are sold separately.

Ratings



300V

IP69K Rated

Performance Characteristics

✓ Operating Temperature: -20° to 80°C ✓ Oil and UV Resistant

Features & Benefits

Specially Compounded Thermoplastic Elastomer Receptacle Insert

Provides long flex-life, resists deterioration due to heat and oil exposure.

Hard Coated Metal Alloy Receptacle Shell

Resists corrosion and provides quick and secure assembly.

Molded and Keyed Assembly

Provides rapid and secure connection and disconnect. Ensures water, oil, and dust tight seal.

Nickel-Coated and Gold-Plated Solid Brass Contact Pins Machined Crimped to Conductors

Provides long life, resists corrosion, easy positive engagement. Ensures electrical integrity DC applications.

Rubber Sealing O-Ring and Steel Locknut

Seals out oil, chemicals, and other contaminants. Locknut included with each unit.

18 AWG Stranded, Tinned Copper Pigtails Insulated with 105°C Cross-Linked Polyethylene

Provides excellent oil and heat resistance.

Mating Dimensions: M12 x 1.0 Thread with One Keyway on Receptacle Face

Industry standard for M12 DC Micro Receptacles.

Ordering Information

For complete product ordering information, please scan the QR Code or contact your ATPC sales representative

2 POLE



3 POLE



4 POLE



5 POLE



8 POLE



Female Face View

Color Code

1 - BROWN
2 - NOT USED
3 - BLUE
4 - NOT USED
5 - NOT USED

1 - BROWN
2 - NOT USED
3 - BLUE
4 - BLACK
5 - NOT USED

1 - BROWN
2 - WHITE
3 - BLUE
4 - BLACK
5 - NOT USED

1 - BROWN
2 - WHITE
3 - BLUE
4 - BLACK
5 - GRAY

1 - WHITE
2 - BROWN
3 - GREEN
4 - YELLOW
5 - GRAY
6 - PINK
7 - BLUE
8 - RED

Ampacity

5A

5A

5A

5A

4A

Back Mount Female Receptacle



M12 DC Micro Cordsets

Quick-Connex® M12 DC Micro Receptacles

Style	2 POLE	3 POLE	4 POLE	5 POLE	8 POLE *	Pigtail Length Feet	Pigtail Length Meters
Female Panel Mount Receptacles	RF12TPTF004	RF13TPTF004	RF14TPTF004	RF15TPTF004	RF18TPTM001	4	1.22
Female Back Mount Receptacles	--	RF13QPTF004	RF14QPTF004	RF15QPTF004	--	4	1.22
Male Panel Mount Receptacles	RF12RPTF001	RF13RPTF001	RF14RPTF001	RF15RPTF001	RF18RPTM001	1	0.3
	--	RF13RPTF004	RF14RPTF004	RF15RPTF004	--	4	1.22
Male Switch Body Mount Receptacles	RF12SPTF001	RF13SPTF001	RF14SPTF001	RF15SPTF001	--	1	0.3
	--	RF13SPTF004	RF14SPTF004	RF15SPTF004	--	4	1.22

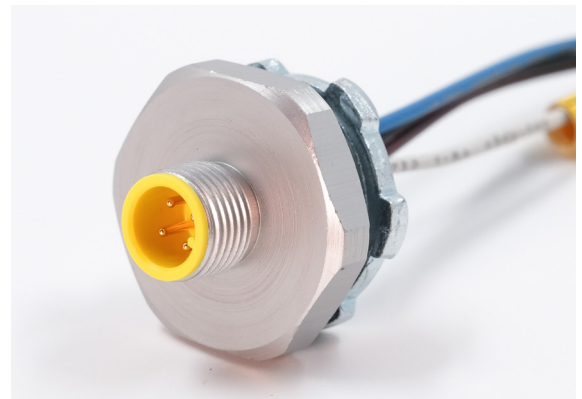
Notes

*8 Pole Receptacles are for use with both shielded and non-shielded cordsets. Pigtail length is 1 Meter.

Closure Caps

Fits All M12 DC Micros

Closure Cap with 6" Chain for Male Connectors and Receptacles with External Thread	64801
Stainless Steel Closure Cap with 6" Chain for Male Connectors and Receptacles with External Thread	64801S
Closure Cap with 6" Chain for Female Connectors and Receptacles with Internal Thread	64802
Stainless Steel Closure Cap with 6" Chain for Female Connectors and Receptacles with Internal Thread	64802S



Male Switch Body Mount Receptacle



Female Cordset



Male Cordset

M12 DC Micro Cordsets

Quick-Connex® M12 DC Micro Cordsets

Quick-Connex® M12 DC Micro Cordsets make replacement of electrical and electronic control devices quick and simple. Cordsets made with Trex-Onics® Control Cable are designed for high cycle, constant motion applications and provides excellent defense against impact, cutting, abrasion, oil and chemicals. The molded and keyed thermoplastic cordset provides rapid and secure connection and disconnect and ensures a water, oil and dust tight seal.

Ratings 300V Max Conductor Temperature 80°C IP69K Rated

Performance Characteristics

- ✓ Operating Temperature: -20° to 80°C
- ✓ UV Resistant
- ✓ Oil Resistant
- ✓ **Bend Radius of Trex-Onics® Control Cable:**
(Static) 6x Cable OD, (Dynamic) 8x Cable OD

Engineered to Resist

- Flexing
- Abrasion
- Chemicals

Features & Benefits

Cordsets Made with Trex-Onics® Control Cable, Rated 80°C

Designed for high cycle, constant motion applications for all weather flexibility. Superior first-line defense against tearing, abrasion, impact, oil, ozone and most chemicals.

Connector Body is Specially Compounded, Thermoplastic Elastomer

Provides long life, resists heat and oil deterioration.

Molded and Keyed Assembly

Provides rapid and secure connection and disconnect. Ensures a water, oil, and dust tight seal.

Solid Brass Contact Pins are Nickel Coated and Gold Plated, Machine Crimped to Conductors

Provides long life, resists corrosion, easy positive engagement. Ensures electrical integrity in DC applications.

Hard Coated Metal Alloy Knurled Coupling Nut

Resists corrosion, provides quick and secure assembly.

Rubber O-Ring

Seals out oil, chemicals and other contaminants. Provides a positive seal on mated components.

Coupling Nut M12 x 1.0 Thread with One Keyway on Connector Face

Industry standard for M12 DC Micro connectors.

Ordering Information For complete product ordering information, please scan the QR Code or contact your ATPC sales representative

2 POLE

3 POLE

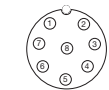
4 POLE

5 POLE

8 POLE

8 POLE - SHIELDED

Female Face View



Color Code

- 1 - BROWN
- 2 - NOT USED
- 3 - BLUE
- 4 - NOT USED
- 5 - NOT USED

- 1 - BROWN
- 2 - NOT USED
- 3 - BLUE
- 4 - BLACK
- 5 - NOT USED

- 1 - BROWN
- 2 - WHITE
- 3 - BLUE
- 4 - BLACK
- 5 - NOT USED

- 1 - BROWN
- 2 - WHITE
- 3 - BLUE
- 4 - BLACK
- 5 - GRAY

- 1 - WHITE
- 2 - BROWN
- 3 - GREEN
- 4 - YELLOW
- 5 - GRAY
- 6 - PINK
- 7 - BLUE
- 8 - RED

- 1 - WHITE
- 2 - BROWN
- 3 - GREEN
- 4 - YELLOW
- 5 - GRAY
- 6 - PINK
- 7 - BLUE
- 8 - RED

Ampacity

5A

5A

5A

5A

4A

4A

90° Cordset



Quick-Connex® M12 DC Micro Cordsets

Style	2 POLE	3 POLE	4 POLE	5 POLE	8 POLE	8 POLE - SHIELDED	Cordset Length Feet	Cordset Length Meters
Female Straight Cordsets	CF12C16M001	CF13C17M001	CF14C18M001	CF15C19M001	CF18C60M001	CF18C61M001	3.28	1
	CF12C16M002	CF13C17M002	CF14C18M002	CF15C19M002	CF18C60M002	CF18C61M002	6.56	2
	CF12C16M004	CF13C17M004	CF14C18M004	CF15C19M004	CF18C60M004	CF18C61M004	13.12	4
	CF12C16M006	CF13C17M006	CF14C18M006	CF15C19M006	CF18C60M006	CF18C61M006	19.68	6
	CF12C16M010	CF13C17M010	CF14C18M010	CF15C19M010	CF18C60M010	CF18C61M010	32.8	10
	--	CF13C17M015	CF14C18M015	CF15C19M015	CF18C60M015	CF18C61M015	49.21	15
	--	CF13C17M020	CF14C18M020	CF15C19M020	CF18C60M020	CF18C61M020	65.61	20
	--	CF13C17M025	CF14C18M025	CF15C19M025	CF18C60M025	CF18C61M025	82.02	25
--	CF13C17M030	CF14C18M030	CF15C19M030	CF18C60M030	CF18C61M030	98.42	30	
Female 90° Cordsets	CF12D16M001	CF13D17M001	CF14D18M001	CF15D19M001	CF18D60M001	CF18D61M001	3.28	1
	CF12D16M002	CF13D17M002	CF14D18M002	CF15D19M002	CF18D60M002	CF18D61M002	6.56	2
	CF12D16M004	CF13D17M004	CF14D18M004	CF15D19M004	CF18D60M004	CF18D61M004	13.12	4
	CF12D16M006	CF13D17M006	CF14D18M006	CF15D19M006	CF18D60M006	CF18D61M006	19.67	6
	--	CF13D17M010	CF14D18M010	CF15D19M010	CF18D60M010	CF18D61M010	32.8	10
	--	CF13D17M015	CF14D18M015	CF15D19M015	CF18D60M015	CF18D61M015	49.21	15
	--	CF13D17M020	CF14D18M020	CF15D19M020	CF18D60M020	CF18D61M020	65.61	20
	--	CF13D17M025	CF14D18M025	CF15D19M025	CF18D60M025	CF18D61M025	82.02	25
--	CF13D17M030	CF14D18M030	CF15D19M030	CF18D60M030	CF18D61M030	98.42	30	
Male-Female Straight Cordsets	CF22E16M001	CF23E17M001	CF24E18M001	CF25E19M001	CF28E60M001	CF28E61M001	3.28	1
	CF22E16M002	CF23E17M002	CF24E18M002	CF25E19M002	CF28E60M002	CF28E61M002	6.56	2
	CF22E16M004	CF23E17M004	CF24E18M004	CF25E19M004	CF28E60M004	CF28E61M004	13.12	4
	CF22E16M006	CF23E17M006	CF24E18M006	CF25E19M006	CF28E60M006	CF28E61M006	19.67	6
	CF22E16M010	CF23E17M010	CF24E18M010	CF25E19M010	CF28E60M010	CF28E61M010	32.8	10
	--	CF23E17M015	CF24E18M015	CF25E19M015	CF28E60M015	CF28E61M015	49.21	15
	--	CF23E17M020	CF24E18M020	CF25E19M020	CF28E60M020	CF28E61M020	65.61	20
	--	CF23E17M025	CF24E18M025	CF25E19M025	CF28E60M025	CF28E61M025	82.02	25
--	CF23E17M030	CF24E18M030	CF25E19M030	CF28E60M030	CF28E61M030	98.42	30	
Male Straight/ Female 90° Cordsets	--	CF23F17M001	CF24F18M001	CF25F19M001	CF28F60M001	CF28F61M001	3.28	1
	--	CF23F17M002	CF24F18M002	CF25F19M002	CF28F60M002	CF28F61M002	6.56	2
	--	CF23F17M004	CF24F18M004	CF25F19M004	CF28F60M004	CF28F61M004	13.12	4
	--	CF23F17M006	CF24F18M006	CF25F19M006	CF28F60M006	CF28F61M006	19.67	6
	--	--	CF24F18M010	CF25F19M010	CF28F60M010	CF28F61M010	32.8	10



Female Cordset



Male Cordset

M12 DC Micro Cordsets

Quick-Connex® SJOO M12 DC Micro Cordsets

Quick-Connex® SJOO M12 DC Micro Cordsets make replacement of electrical and electronic control devices quick and simple. Cordsets are made with Super-Trex® SJOO Ultra-Gard® Portable Cord, a superior first-line of defense against tearing, abrasion, impact, oil, ozone and most chemicals. The molded and keyed thermoplastic cordset provides rapid and secure connect and disconnect and ensures a water, oil and dust tight seal.

Ratings 300V Max Conductor Temperature 90°C IP69K Rated

Performance Characteristics

- ✓ Operating Temperature: -20° to 80°C
- ✓ UV Resistant
- ✓ Oil Resistant
- ✓ **Bend Radius of Super-Trex® Type SJOO Cable:** (Static) 6x Cable OD, (Dynamic) 8x Cable OD

Engineered to Resist

- Abrasion
- High Temperature
- Chemicals

Features & Benefits

<p>Cordsets Made with Super-Trex® Type SJOO Cable, Rated 90°C</p> <p>Superior first-line defense against tearing, abrasion, impact, oil, ozone and most chemicals. Flame and heat resistant. Extreme all-weather flexibility.</p>	<p>Connector Body is Specially Compounded, Thermoplastic Elastomer</p> <p>Provides long life, resists heat and oil deterioration.</p>	<p>Molded and Keyed Assembly</p> <p>Provides rapid and secure connection and disconnect. Ensures water, oil, and dust tight seal.</p>	<p>Solid Brass Contact Pins are Nickel Coated and Gold Plated, Machined Crimped to Conductors</p> <p>Provides long life, resists corrosion, easy positive engagement. Ensures electrical integrity DC applications.</p>
<p>Hard Coated Metal Alloy Knurled Coupling Nut</p> <p>Resists corrosion provides quick and secure assembly.</p>	<p>Rubber O-Ring</p> <p>Seals out oil, chemicals and other contaminants. Provides a positive seal on mated components.</p>	<p>Coupling Nut M12 x 1.0 Thread with One Keyway on Connector Face</p> <p>Industry standard for M12 DC Micro connectors.</p>	

Ordering Information For complete product ordering information, please scan the QR Code or contact your ATPC sales representative

	3 POLE	4 POLE	5 POLE
Female Face View			
Color Code	1 - BROWN 2 - NOT USED 3 - BLUE 4 - BLACK 5 - NOT USED	1 - BROWN 2 - WHITE 3 - BLUE 4 - BLACK 5 - NOT USED	1 - BROWN 2 - WHITE 3 - BLUE 4 - BLACK 5 - GRAY
Ampacity	5A	5A	5A

90° Cordset



M12 DC Micro Cordsets

Quick-Connex® SJ00 M12 DC Micro Cordsets

Style	3 POLE	4 POLE	5 POLE	Cordset Length Feet	Cordset Length Meters
Female Straight Cordsets	CF13C24M001	CF14C25M001	CF15C26M001	3.28	1
	CF13C24M002	CF14C25M002	CF15C26M002	6.56	2
	CF13C24M004	CF14C25M004	CF15C26M004	13.12	4
	CF13C24M006	CF14C25M006	CF15C26M006	19.68	6
	CF13C24M010	CF14C25M010	CF15C26M010	32.08	10
	CF13C24M015	CF14C25M015	CF15C26M015	49.21	15
	CF13C24M020	CF14C25M020	CF15C26M020	65.61	20
	CF13C24M025	CF14C25M025	CF15C26M025	82.02	25
	CF13C24M030	CF14C25M030	CF15C26M030	98.42	30
Female 90° Cordsets	CF13D24M001	CF14D25M001	CF15D26M001	3.28	1
	CF13D24M002	CF14D25M002	CF15D26M002	6.56	2
	CF13D24M004	CF14D25M004	CF15D26M004	13.12	4
	CF13D24M006	CF14D25M006	CF15D26M006	19.68	6
	CF13D24M010	CF14D25M010	CF15D26M010	32.08	10
	CF13D24M015	CF14D25M015	CF15D26M015	49.21	15
	CF13D24M020	CF14D25M020	CF15D26M020	65.61	20
	CF13D24M025	CF14D25M025	CF15D26M025	82.02	25
	CF13D24M030	CF14D25M030	CF15D26M030	98.42	30
Male-Female Straight Cordsets	CF23E24M001	CF24E25M001	CF25E26M001	3.28	1
	CF23E24M002	CF24E25M002	CF25E26M002	6.56	2
	CF23E24M004	CF24E25M004	CF25E26M004	13.12	4
	CF23E24M006	CF24E25M006	CF25E26M006	19.68	6
	CF23E24M010	CF24E25M010	CF25E26M010	32.08	10
	CF23E24M015	CF24E25M015	CF25E26M015	49.21	15
	CF23E24M020	CF24E25M020	CF25E26M020	65.61	20
	CF23E24M025	CF24E25M025	CF25E26M025	82.02	25
	CF23E24M030	CF24E25M030	CF25E26M030	98.42	30
Male Straight/ Female 90° Cordsets	CF23F24M001	CF24F25M001	CF25F26M001	3.28	1
	CF23F24M002	CF24F25M002	CF25F26M002	6.56	2
	CF23F24M004	CF24F25M004	CF25F26M004	13.12	4
	CF23F24M006	CF24F25M006	CF25F26M006	19.68	6
	CF23F24M010	CF24F25M010	CF25F26M010	32.08	10
Male 90°/Female Straight Cordsets	CF23G24M001	CF24G25M001	CF25G26M001	3.28	1
	CF23G24M002	CF24G25M002	CF25G26M002	6.56	2
	CF23G24M004	CF24G25M004	CF25G26M004	13.12	4
	CF23G24M006	CF24G25M006	CF25G26M006	19.68	6
	CF23G24M010	CF24G25M010	CF25G26M010	32.08	10